



1-2 February 2010
KORANET PARTNERING EVENT

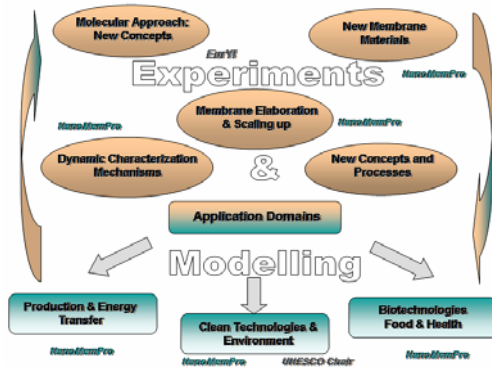
Research for life-long health

Dr. Mihail BARBOIU
INSTITUT EUROPEEN des MEMBRANES –
MONTPELLIER- FRANCE- UMR-CNRS 5635
DYNAMIC INTERACTIVE MULTIVALENT
NANOPLATFORMS



INSTITUT EUROPEEN DES MEMBRANES

partnering, partnering, partnering, partnering, partnering



Research, Education, Valorization of Membrane Materials and Processes. Partnership, Support to Firms



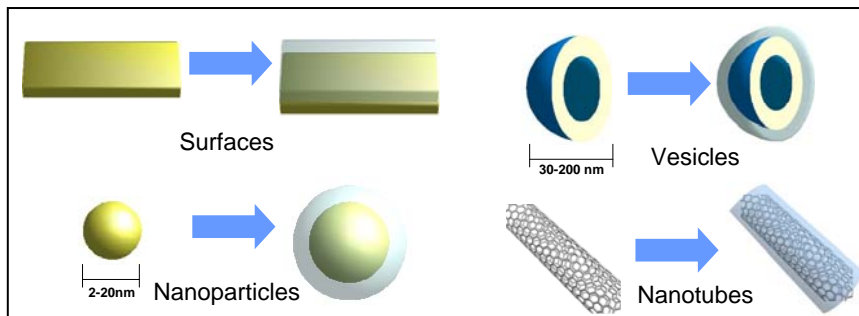


PROJECT IDEA

partnering, partnering, partnering, partnering, partnering

DYNAMIC INTERACTIVE MULTIVALENT NANOPLATFORMS

Aim: To investigate the sugar-protein biinteractions by quartz crystal microbalance using nanoplatforms as both QCM mass amplifiers and as biomimetic saccharide platforms

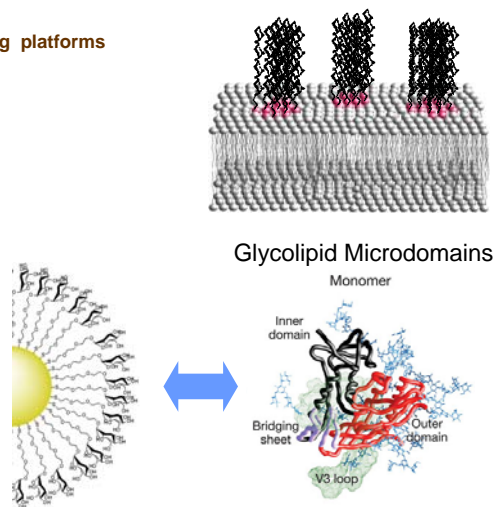


EXPERTISE

partnering, partnering, partnering, partnering, partnering

Glyconanoparticles as QCM signal amplifying platforms

- Water soluble
- Non-specific binding resistant
- Mass increase ~ 6000%
- Biomimetic-Multivalent presentation
- Nanotechnology
- Supramolecular chemistry
- Membranes
- Materials science

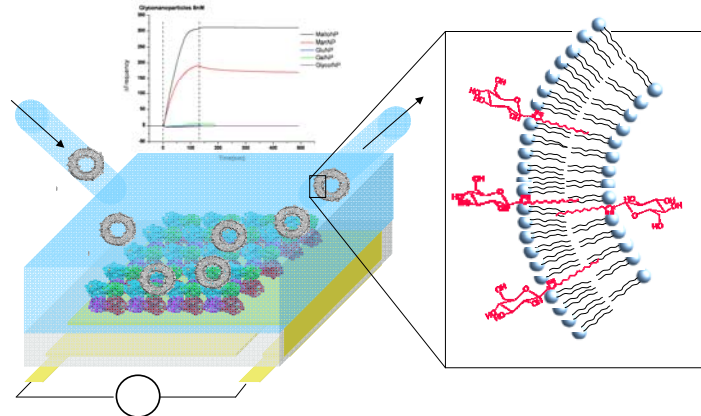




PARTNER SOUGHT

partnering, partnering, partnering, partnering, partnering

- Biomolecules Dynamically Partitioned in nanoplateforms
- Protein surfaces prepared by dynamic immobilisation
- Nanoplateforms solutions tested in QCM



CONTACT DETAILS

partnering, partnering, partnering, partnering, partnering

Dr. Mihail BARBOIU
Institut Européen des Membranes
Place Eugene Bataillon, CC047
34095 Montpellier, France
Tel: +33642449557
Fax: +33467149119
E-mail: mihai.barboiu@iemm.univ-montp2.fr

