



1-2 February 2010
KORANET PARTNERING EVENT

Research for life-long health

Peter Enste Institute for Work and Technology

-Prospects and challenges of an ageing society-



RESEARCH CENTRE

partnering, partnering, partnering, partnering, partnering

The Institute for Work and Technology

- ...is a research organisation of the University of Applied Sciences Gelsenkirchen and a co-operation partner of the Ruhr-University Bochum.
- ...is positioned at the interface of science and practice.
- ...carries out basic research, analyses of current development trends and concepts to increase prosperity and quality of life.

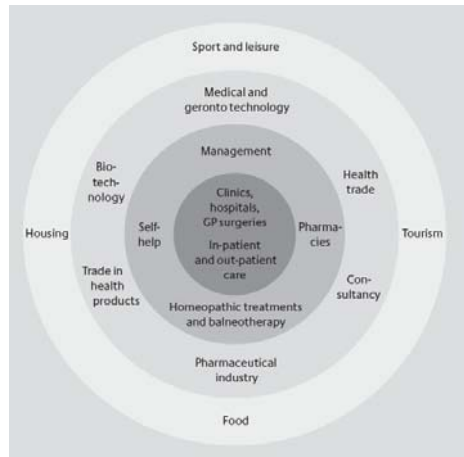




RESEARCH CENTRE

partnering, partnering, partnering, partnering, partnering

Department "Health Industries & Quality of Life" :



Development of products and services on company, regional and international level



PROJECT IDEAS

partnering, partnering, partnering, partnering, partnering

- Concepts of housing for an independent living (special focus on high-risk groups of the elderly: dementia, age poverty, retirement homes)
- Comparing models of citizens involvement for an ageing society
- Further development and future trends of the silver market
- Development of business models in health and wellness industries with a special focus on prevention
- Development of business models in E-health and Telemedicine
- Internationalisation of Health Care
- Evaluation of health-related projects





EXPERTISE

partnering, partnering, partnering, partnering, partnering

The Institute Work and Technology

- ...is dealing with the topic of silver economy since 1999
- ...has several national and international partners in the field of E-health and telemedicine
- ...develops international indication specific caring systems and networks
- ...participated in the WHO-Project „Age Friendly Cities“



PARTNER SOUGHT

partnering, partnering, partnering, partnering, partnering

International partners from science and practice with a focus on similar research interests





CONTACT DETAILS

partnering, partnering, partnering, partnering, partnering

Institute for Work and Technology

Peter Enste

Munscheidstraße 14

45886 Gelsenkirchen

Germany

Tel.: +49-209/1707-133

enste@iat.eu

www.iat.eu

